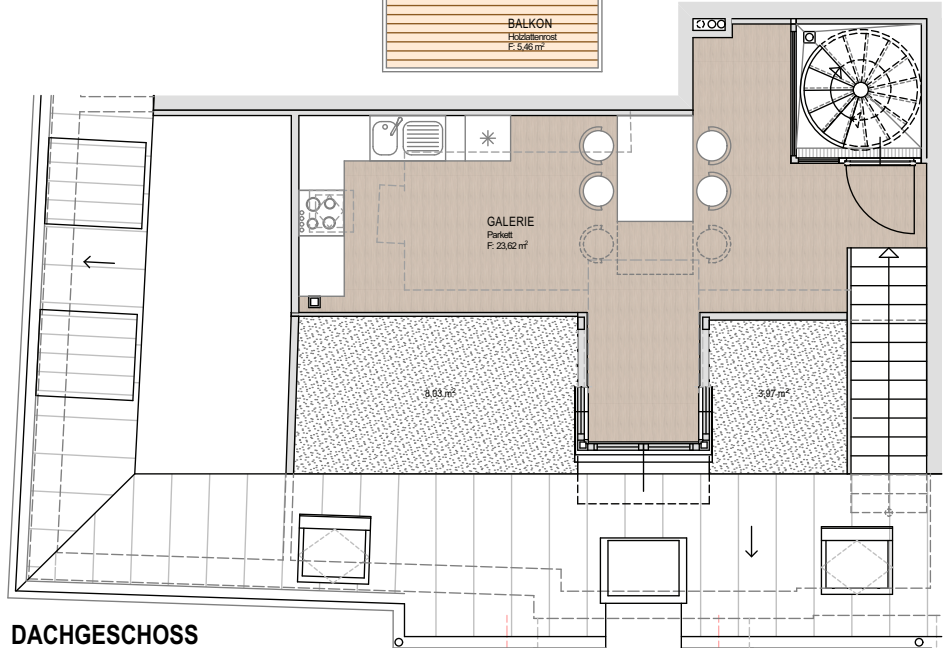
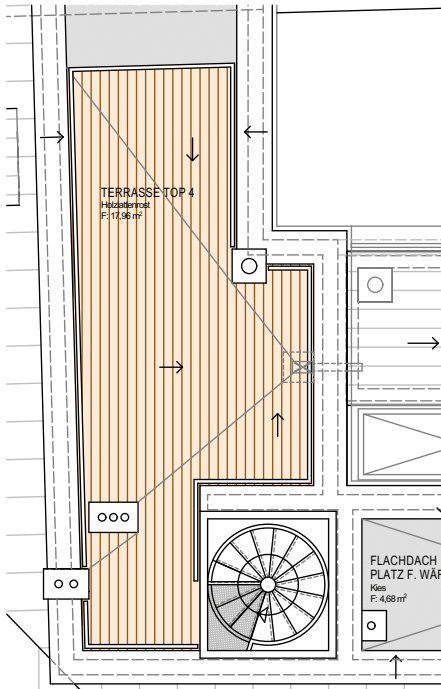
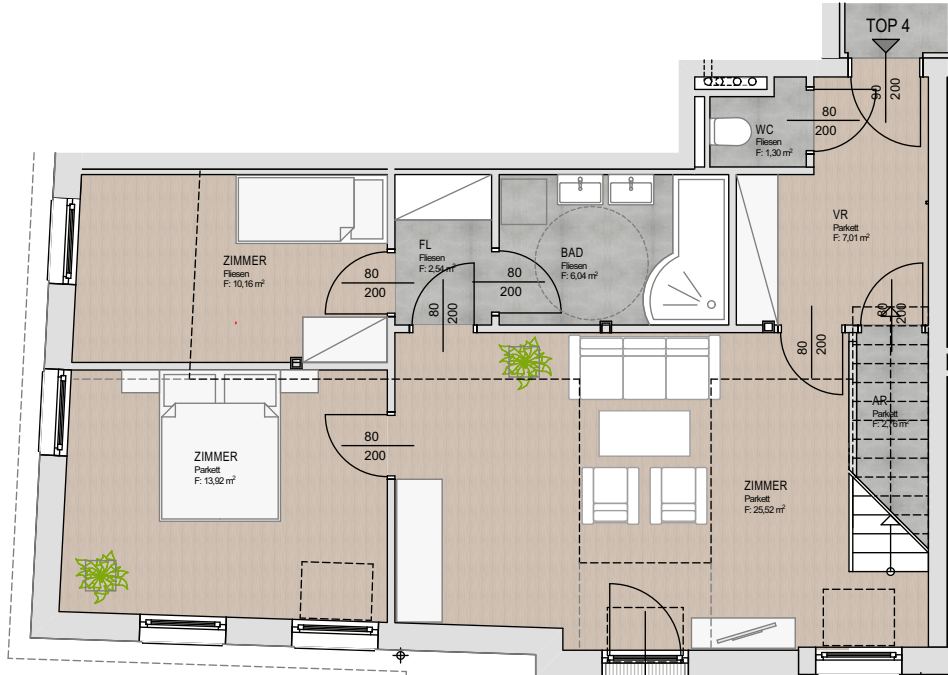


# Exclusives Wohnen im Hietzing

VITUSGASSE 6, 1130 WIEN



## TOP 4

**WOHNFLÄCHE**  
92,87 m<sup>2</sup>

**BALKON**  
5,46 m<sup>2</sup>

**TERRASSE**  
17,96 m<sup>2</sup>

**KELLERABTEIL**  
2,57 m<sup>2</sup>

## OBERGESCHOSS

VORR	7,01 m <sup>2</sup>
WC	1,30 m <sup>2</sup>
AR	2,76 m <sup>2</sup>
ZIMMER	25,52 m <sup>2</sup>
ZIMMER	13,92 m <sup>2</sup>
ZIMMER	10,16 m <sup>2</sup>
FLUR	2,54 m <sup>2</sup>
BAD	6,04 m <sup>2</sup>
<b>WNFL</b>	<b>69,25 m<sup>2</sup></b>
BALKON	5,46 m <sup>2</sup>

## DACHGESCHOSS

GALERIE	23,62 m <sup>2</sup>
<b>WNFL</b>	<b>23,62 m<sup>2</sup></b>
DACHTERRASSE	17,96 m <sup>2</sup>

